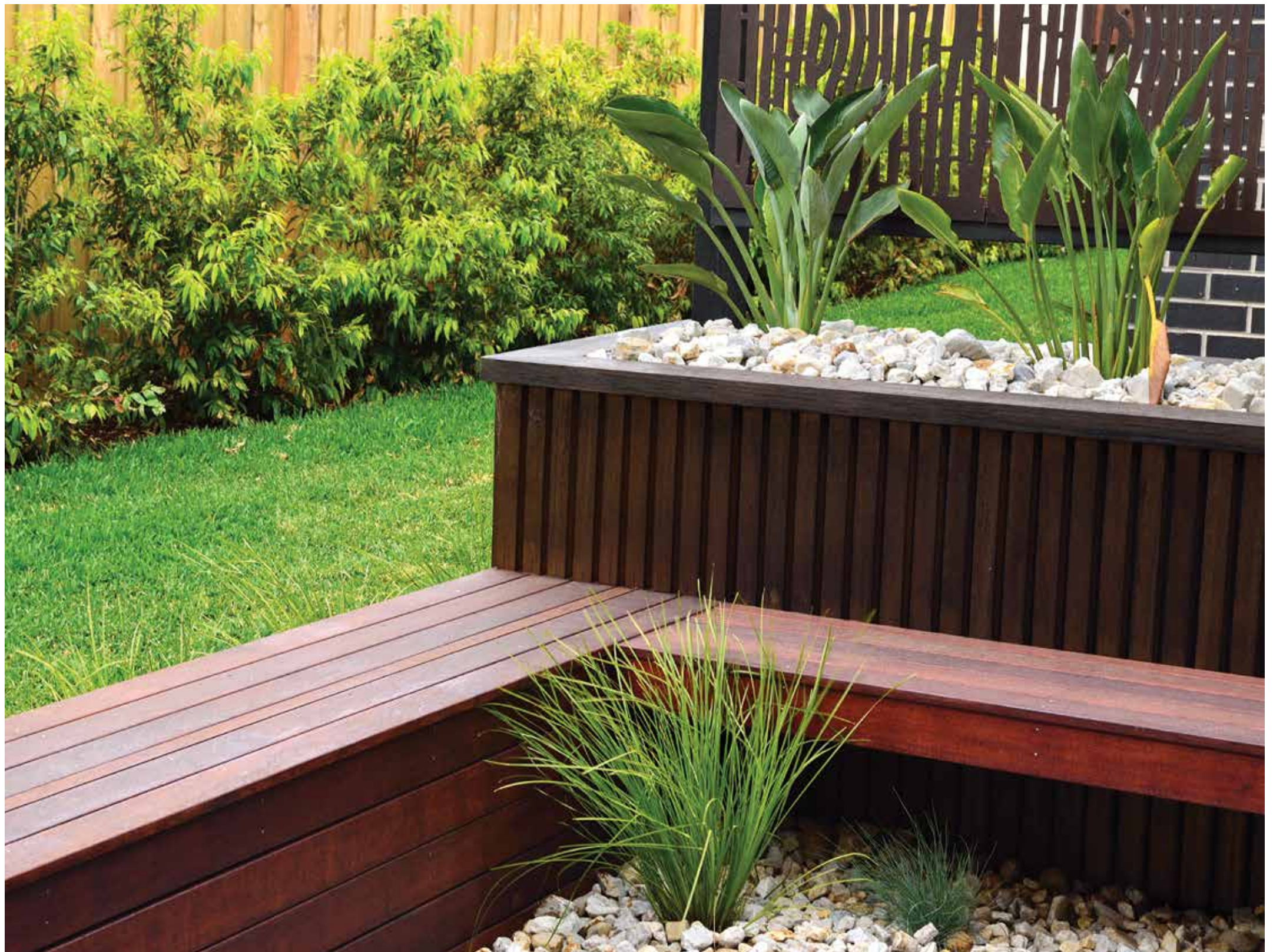


A woman and a young girl are playing in a park. The woman is lifting the girl's arms, and the girl is smiling. The background is a blurred park scene with other people.

MONUMENT

GARDEN
INSPIRATION

GARDEN DISPLAY GUIDE



INTRODUCTION

RESI VENTURES LOVES BRINGING LAND TO LIFE

Creating communities that people want to call home. We see each community that we create as a living, breathing entity and what better way to showcase that with state-of-the-art front gardens designed by an award-winning landscape architect. After a long day at work, when you come home you want to relax – that's why we will be creating an amazing garden filled estate. From the entrance to the gorgeous front gardens and an amazing park you will be proud to call it your home.

Over time the front gardens, the streetscape and the state-of-the-art park will integrate and beautify the overall aesthetics of the estate. You get a choice of six beautiful designs for your front garden, so your house becomes a home. A home that you are proud of and a home that is the envy of your friends.

We invite you to be part of our vision and our new community.

Anthony Braunthal DIRECTOR

Khurram Saeed DIRECTOR

Resi Ventures
Creating Prosperity

MONUMENT GARDEN INSPIRATION

The inspiration for the six garden choices at Monument was to provide a diverse choice of attractive, low maintenance gardens that change colour with the seasons and provide year round visual interest.

All the gardens offer clearly differentiated styles, but with an integration between colours and plants that continues into the broader estate design. The layouts, materials, flowers and foliage options are designed to cater to a broad range of tastes, in modern styles to complement the development.

This is reflected in the names of the styles: Contemporary, Asian, Geometric, Bold, Bush and Classical.

The range of hardy native and exotic ground covers, trees and shrubs will grow in a layered fashion so there will be a variety of different heights, sizes and forms. We have also given the gardens texture through contrasting foliage types. There is a lot of colour, with red, yellow, blue and pink flowers as well as foliage ranging from green to red, purple and silver.

Scale is also important so all the plants are suitable for front gardens with small set backs to dwellings, to ensure the gardens remain in scale with the house as they grow.

By selecting drought resistant plants we will ensure the gardens will survive the toughest of seasons, as well as preserving valuable water resources. They are also low maintenance to ensure the home owners have to spend a minimum of time on upkeep.

While we have created clearly different designs, we have integrated the plants into the overall masterplan to create a beautiful and integrated environment to give the whole estate a cohesive look and feel.

When completed, Monument will be a beautiful green environment that encourages wildlife and activity from residents in a garden lifestyle that changes with the seasons.

Nicole Faulkner

Manager Landscape
Architecture & Urban Design

BW
Beveridge Williams

CONTEMPORARY

The Contemporary Garden is a balance of simple and clean materials softened with colourful and hardy native planting.

The pavers make the area feel larger, and the contrast between the light pavers and the dark pebbles provides an interesting contrast.

The feature tree *Corymbia* 'Summer Red' anchors the design, whilst the understory planting is a mix of greens, purples and reds. The garden will have an abundance of colours and contrasts throughout the year.



THIS GARDEN INCLUDES:

- > Pavers (light sand colour) / Timber Edging /
- > Garden Pebbles (dark grey colour) /
- > Feature Tree / Mulched Planting Beds

*PLANTS INCLUDED ARE:

- | | |
|-----------------------------------|-----------------------------------|
| > Callistemon 'Little John' | > Anigozanthos 'Ruby Velvet' |
| > Corymbia 'Summer Red' | > Dianella tasmanica |
| > Acacia 'Mini Cog' | > Dianella caerulea 'Little Jess' |
| > Correa pulchella 'Autumn Blaze' | > Lomandra longifolia 'Tanika' |
| > Dodonaea viscosa 'Purpurea' | > Myoporum parvifolium |
| > Eremophila nivea | > Orthrosanthus multiflorus |
| > Grevillea 'Firecracker' | > Viola hederacea |
| > Grevillea 'Robyn Gordon' | |

Beveridge Williams Landscape Architect *Or similar approved. Subject to availability.

DISPLAY GARDEN ONE

FEATURE TREE

CORYMBIA 'SUMMER RED'

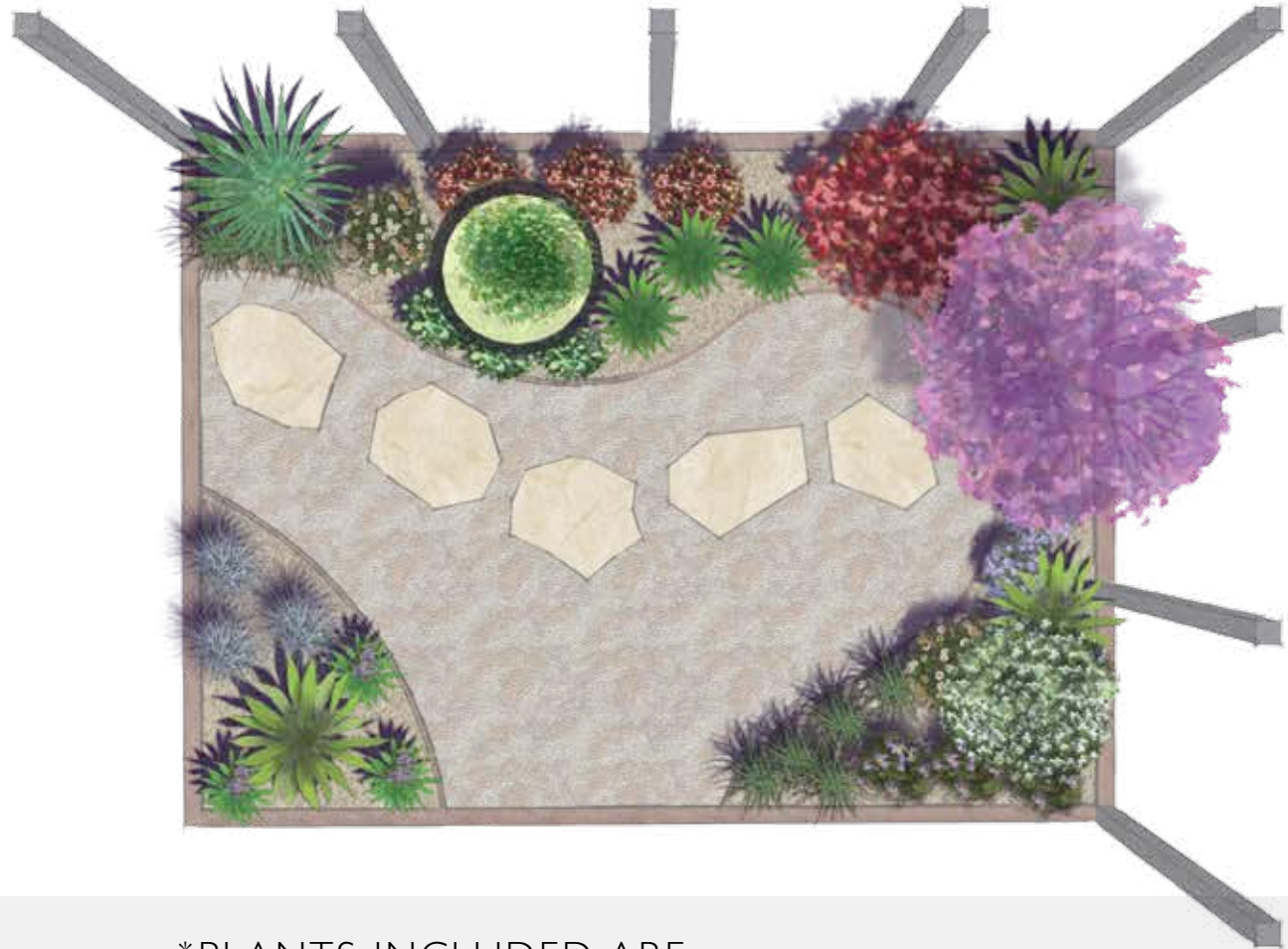
TIMBER EDGING

CONTRASTING PAVERS & DARK PEBBLES

ASIAN INSPIRATION

The Asian Inspiration Garden blends soft curved garden bed edging with bold, colourful planting of an Asian origin.

The large crazy pavers provide a guide through the garden, to a space of contemplation and reflection.



THIS GARDEN INCLUDES:

- > Tuscan Toppings / Timber Edging /
- > Crazy Pavers (sandstone colour) /
- > Feature Tree / Mulched Planting Beds

*PLANTS INCLUDED ARE:

- | | |
|-------------------------------------|--|
| > Lagerstroemia 'Natchez' | > Dietes grandiflora |
| > Cercis canadensis 'Forest Pansy' | > Erigeron karvinskianus |
| > Convolvulus mauritanicus | > Felicia amelloides |
| > Loropetalum rubrum 'Blush' | > Festuca glauca |
| > Rhapsiolepis indica 'Snow Maiden' | > Liriope 'Evergreen Giant' |
| > Ajuga reptans 'Catlin's Giant' | > Nandina domestica 'Nana' |
| > Astelia 'Silver Shadow' | > Ophiopogon japonicus |
| > Bambusa 'Textilis Gracilis' | > Trachelospermum asiaticum 'Flat Mat' |

Beveridge Williams Landscape Architect *Or similar approved. Subject to availability.

DISPLAY GARDEN TWO



GEOMETRIC

The curved edging of the Geometric Garden directs the eye to the focal point of the garden, ideal for a feature ornament.

Each garden bed comprises white flowering plants with contrasting warm red-orange colours throughout.

The circular stepping pavers complement the curved form of the garden, framing the area of open turf.



THIS GARDEN INCLUDES:

- > Turfed Grass / Timber Edging /
- > Granitic Sand / Feature Tree /
- > Round Pavers (blue colour) /
- > Mulched Planting Beds

*PLANTS INCLUDED ARE:

- > Lagerstroemia 'Natchez'
- > Adenanthos cuneatus
- > Convolvulus cneorum
- > Westringia 'Smokey'
- > Agapanthus 'Snowflake'
- > Cordyline 'Purpurea'
- > Dianella 'Little Rev'
- > Dietes bicolor
- > Doryanthes excelsa
- > Escallonia 'Pink Pixie'
- > Gazania 'Frosty Red'
- > Hebe 'Sunset Boulevard'
- > Phormium 'Bronze Baby'

Beveridge Williams Landscape Architect *Or similar approved. Subject to availability.

DISPLAY GARDEN THREE



FEATURE TREE

LAGERSTROEMIA 'NATCHEZ'

TURFED GRASS

TIMBER EDGING

MULCHED PLANTER BEDS

ROUND BLUE PAVERS

BOLD ARCHITECTURAL

The Bold Architectural Garden features contrasting design elements which create a strong landscape statement and interesting space to inhabit.

The curved garden bed edging against the rectangular pavers, and the combination of the soft and the bold in the planting design, provides a unique landscape experience that will provide colour and interest in the garden.



THIS GARDEN INCLUDES:

- > Turfed Grass / Timber Edging /
- > Rectangle Pavers (dark grey) /
- > Feature Tree / Mulched Planting Beds

*PLANTS INCLUDED ARE:

- | | |
|--------------------------------|---|
| > Callistemon 'Red Rocket' | > Cordyline 'Red Star' |
| > Eucalyptus 'Euky Dwarf' | > Dianella 'Cassa Blue' |
| > Agave attenuata | > Grevillea lavandulacea x alpina 'Jelly Belly' |
| > Agave geminiflora | > Leucophyta 'Silver Nugget' |
| > Aeonium 'Garnet' | > Phormium 'Merlot' |
| > Asparagus densiflorus | > Sedum 'Autumn Joy' |
| > Beschorneria yuccoides | > Senecio serpens |
| > Carpobrotus 'Aussie Rambler' | > Strelitzia reginae |

Beveridge Williams Landscape Architect *Or similar approved. Subject to availability.

DISPLAY GARDEN FOUR

FEATURE TREE

EUCALYPTUS 'EUKY DWARF'



TURFED GRASS

TIMBER EDGING

RECTANGULAR GREY PAVERS

BUSH STYLE

Inspired by the Australian landscape, the Bush Style Garden comprises hardy native planting of green, blue and red colours.

The garden bed planting is complemented by timber sleepers, which create a soft and natural environment.



THIS GARDEN INCLUDES:

- > Granitic Sand / Timber Sleepers /
- > Timber edging / Feature Tree /
- > Mulched Planting Beds

*PLANTS INCLUDED ARE:

- | | |
|-------------------------------|--------------------------------|
| > Callistemon 'Slim' | > Chrysocephalum apiculatum |
| > Eucalyptus 'Euky Dwarf' | > Dianella tasmanica |
| > Brachyscome 'Coastal Gem' | > Eremophila 'Silver Spread' |
| > Correa alba | > Grevillea 'Mt Tamboritha' |
| > Correa 'Dusky Bells' | > Lomandra longifolia |
| > Leucadendron 'Red Gem' | > Lomandra longifolia 'Tanika' |
| > Leptospermum 'Pink Cascade' | > Poa 'Eskdale' |
| > Westringia 'Starry Night' | |

Beveridge Williams Landscape Architect *Or similar approved. Subject to availability.

DISPLAY GARDEN FIVE

FEATURE TREE

EUCALYPTUS 'EUKY DWARF'

TIMBER EDGING

TIMBER SLEEPERS

GRANITE SAND

CLASSICAL

The layout of the Classical Garden is inspired by the traditional formal design of European gardens, with a central grassed area framed by symmetrical garden beds.

A central deciduous tree enhances the seasonal experience of the garden and is set against a backdrop of colourful, Australian native understory planting.



THIS GARDEN INCLUDES:

- > Turfed Grass / Brick Pavers (cream colour) /
- > Feature Tree / Mulched Planting Beds

*PLANTS INCLUDED ARE:

- > Pyrus 'Cleveland Select'
- > Hebe 'Pretty N Pink'
- > Lophomyrtus 'Black Stallion'
- > Rhamphiolepis 'Springtime'
- > Syzygium 'Bush Christmas'
- > Coprosma 'Fire Burst'
- > Dietes bicolor
- > Liriope 'Monroe White'
- > Scaevola aemula
- > Syzygium 'Tiny Trev'

DISPLAY GARDEN SIX

FEATURE TREE

PYRUS 'CLEVELAND SELECT'

CREAM BRICK PAVERS

TURFED GRASS

TIMBER EDGING

NOTES

DISCLAIMER

- (a) The imagery used in this brochure is indicative and intended to be a visual aid only. The imagery shows mature gardens. These have been provided to assist purchasers to choose a garden type and may not accurately depict the garden on initial installation.
- (b) All effort has been made to provide accurate information, however readers must make their own enquiries and conduct their own research in relation to purchasing a property at Monument, Plumpton.
- (c) The package only includes those items specifically referred to. It excludes all other materials such as driveways, boundary fencing, any paving, letterbox, outdoor lighting or any maintenance of the landscaping after completion. Prior to landscaping the purchaser must complete construction of the dwelling on the land, remove all rubbish, rubble and vegetation, provide a level grade and a clear path free of obstructions.
- (d) The terms and conditions of the offer can be found at monumentplumpton.com.au. To be eligible for this offer, a purchaser must comply with the requirements and process set out in the contract of sale.
- (e) Changes may be made to the terms of this brochure at any time without notice.

RISE ABOVE





MONUMENT

MONUMENTPLUMPTON.COM.AU

9540 0477

1392 PLUMPTON RD, PLUMPTON

SELLING AGENT



DEVELOPED BY

Resi Ventures
Creating Prosperity